

Welcome to Swank K-12 Streaming

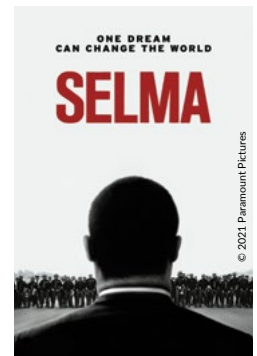


The Swank K-12 Streaming library provides access to over 30,000 movies, documentaries and foreign language films for instructional support.

You now have access to a curated collection of top, educational films which are click-and-play ready in your streaming library. You are also able to search the entire library of films and request new films be added with an approved lesson plan.

Streaming Portal URL: <https://digitalcampus.swankmp.net/SDDOE386472/dashboard>

This website URL should be bookmarked as it is your access point to the streaming library. Simply login with your k12.sd.us email address and password. (Please note, this website URL should not be shared with students.)



Assigning movies to students:

Step 1

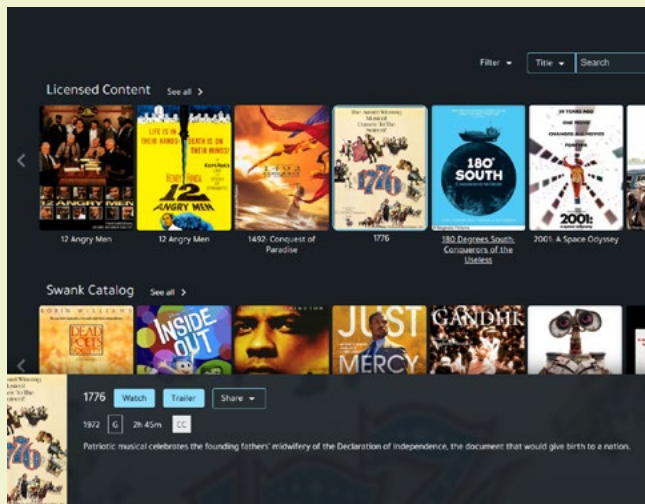
Identify the movie you want to assign to students.

Step 2

Ensure the movie is already available in your streaming library for viewing.

When clicking a movie, if you see “Watch” and “Share” buttons, the film is available.

If you see a “Request” button, you will need to request access and wait for approval from your Swank Administrator prior to assigning the film.



Step 3

Click “Share” on the movie page and select either the Direct Link or the LMS link.

Direct Link: Direct Links are the full URL to the film, which enable access via any sharing option, such as email, course syllabus, and Learning Management Systems.

LMS Link: LMS Links are intended to be placed in Learning Management Systems that accept HTML, such as Blackboard, Canvas, Moodle and many others.

Please note: Google Classroom and Schoology do not accept LMS links. If ever there is a question about which link to use, we recommend the Direct Link to ensure playback.

The website URL or any page URLs in the streaming platform should never be shared with students. They will receive an error message. Please only use either the Direct or LMS links when enabling student access to movies.

Step 4

The South Dakota DOE has single sign on enabled so students will simply log in using their k12.sd.us email address and password.

Teacher login information should never be shared with students as you have different permissions than they do.

Support Contacts:

If you encounter any challenges with the streaming platform and accessing the movies being made available, use the below information as a guide for where to turn to for help:

- 1.** Challenges, support or questions regarding logging in to the streaming platform: Contact the K-12 Data Center by creating a [support ticket](#) or emailing help@k12.sd.us.
- 2.** If you've successfully logged into the streaming platform and are encountering issues with streaming playback or are receiving other error messages associated with the use of the streaming platform: Contact Swank K-12 Streaming by creating a support ticket using this web form [here](#).
- 3.** For questions or information on using the streaming platform including but not limited to searching or requesting movies, playback or assignment of movies, closed captioning and all other uses of the Swank K-12 Streaming platform click [here](#) or contact your [Swank South Dakota DOE Administrator](#).



Helpful Resources:

To ensure you and your teachers have all of the information necessary to watch and assign films, a resource page is included below that includes short how-to videos on various portal functionality, and a teacher and admin guide with step-by-step instructions for navigating the streaming portal.





K12 Streaming Resources: swank.com/k-12-streaming/south-dakota-doe

Access the Swank K-12 Streaming platform provided by South Dakota Department of Education


Simply login with your k12.sd.us email address and password.

[ACCESS NOW](#)

INSTRUCTIONAL VIDEOS

			
HOW TO LOG IN	IN-CLASS USE AND ASSIGNMENT	SEARCHING AND REQUESTING MOVIES	SOLUTIONS FOR 403 MESSAGES

Swank K12 Streaming Help Page: <https://swankmp.clickhelp.co/articles/help-portal-k-12>



Topic-Specific Help

Accessibility	Access Roles	Administrator Controls
Authentication	Playing Movies	Usage Reports
Request Movies	Sharing & Assigning Movies	



Troubleshooting

I'm having trouble logging in.

Are you prompted for username and password as shown in the picture? You may be using an incorrect password or the user account was locked out for too many log in attempts. Verify the general log in credentials with your school's Swank Administrator. The Administrator can also unlock accounts. If the username and password are personalized to you, click Forgot Password to reset your password. If the log in screen does not match the picture, use the log in credentials to access your school's network. If your school's network credentials do not work, contact your school's Swank Administrator for help.